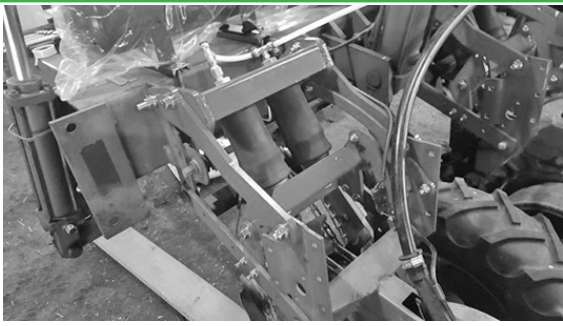


# APRIL FEATURED CLASSIFIEDS

Late model flat rack, 19'x8' w/back, JD 963 running gear, very good cond., \$1,750. (989) 842-5760 or (989) 763-4718



'12 LDJ Fuel Buggy, 1000-gal. dsl. cap., 100-gal. hyd. oil cap., comes w/pump & spare motor, good tires & alum. rims, \$10,000. (616) 218-6038



CYCLO PLANTER DOWN PRESSURE KIT Fits 800, 900, 950 & 955 corn planters, 525 lbs. of avail. down force, the last upgrade you will ever need. (616) 901-0251



'06 1750 6R planter, liq. 2x2 single disc openers, new piston pump, finger pickup corn & bean meters., \$22,500. (517) 230-1253

Pair of 16.9R38 Goodyear DT710 radial tires on dbl. beveled rims, loaded, removed from IH 686 tractor, no weather checking, 70% tread, tires & rims very good cond., \$1,400 or best offer. (586) 531-2184

JD 510 round baler, twine, 5x6 (2) NH 816 chopper boxes on tdm. gears, NH 8 chopper box on 10-ton gear All equipment always stored inside. (989) 862-5014, Cell (989) 277-1532

(2) JD 38" clamp-on duals, \$700  
4R 3-Pt. cult., \$425  
(2) JD 36" rims & cast centers, \$600  
JD 1240 planter, 4R30", very good cond., \$1,800  
Case 200 baler, used last year, \$850 (989) 893-9056



JD 5100M, MFWD, w/540 ldr., 15 hrs., 2-hyd., 16 spd., left hand reverser. (574) 633-4852



Wallenstein BX72RI wood chipper, PTO drive, chips 7" logs, less than 100 hrs., exc. cond. (517) 625-3428



'23 NH Powerstar 100s for rent, \$1,750/month for up to 50 hrs., \$35/hr. overage charge, delivery avail. (616) 893-1996

1000-Gal. water tank on wagon, w/hyd. hoses, \$1,000  
MF 14' Brush Hog, \$1,000  
Countz field Cult., 25', \$1,200  
18' Leveler, \$600 (269) 673-3407



JD dbl. 750 drill, 30', JD hitch, 15" spacing, ready to plant, good blades, boots & tires, barn kept, \$26,500. (517) 917-1860



'08 MT325B Challenger, 68 hp, 1170 hrs., pwr. shuttle, (2) outlets, canopy, good cond., \$25,000 or best offer. (231) 924-9762



'15 PJ 24' gooseneck, 15,680# GVW, exc. cond., spare tire, removable ramps, tool box, winch, lights & brakes work, \$7,200. (231) 821-9224



Hoosierland hydra-push vertical beater manure spreaders, 550-bu. or 420-bu., used or new, for sale or rent, call for price. (989) 637-4990



'17 1254 Roller mill, 4000 bph, swg. load auger, belt discharge, always stored inside, very little use, \$39,000. (616) 893-0139



JD land leveler 10', \$1,300. (989) 285-0892



'91 Marmon 6-axle log truck, 425 hp Cat 18 spd., Prentice 120E ldr. w/5-axle log pup, \$27,000 or best offer Additional sawmill equip. avail. (989) 205-0575

FREE TO A GOOD HOME  
24x70 C&B silo w/roof & Clay unldr., emptied 1-24, has 6-mos. old motor  
BUT WAIT THERE'S MORE  
Not (1), but (2) MF 1560 round balers. That's right Ladies & Gents, (2) for the price of (1)! If it were summer, I could bale w/1 today. The other one would have a day or 2 to get ready. All this for the LOW LOW PRICE of \$1,560 (989) 879-7697

2R Corn planter, older model  
Krause 1413 flex wing tdm. disc harrow  
1500-Gal. Clay Honey Wagon (liquid manure spreader) (231) 667-0888



Reinke irrigation pivots:  
 '15 Model 2065S,G 608', 798 hrs.  
 '15 Model 2065, 641', 1503 hrs.  
 '12 Model 2665, 496", 1104 hrs.  
 '12 Model 2665, 651', 1482 hrs.  
 '12 Model 2665SSAC, 1820', 5294 hrs.,  
 includes 318' swg. arm  
 2000-15 Model 665SSAC, 1200', 4303 hrs.,  
 includes 200' swg. arm  
 Call/Email for specs, add'l. pics & prices  
 (574) 993-5460 or sgaglio@nd.edu



'83 Franklin 120 grapple skidder w/winch,  
 \$15,000 or best offer  
 Additional sawmill equip. avail.  
 (989) 205-0575



Gravity wagon 170-bu. w/14' seed auger,  
 JD running gear, \$3,000 or best offer.  
 (517) 605-3253

NH 258 hay rake, very nice, \$3,000  
 Vicon 8-whl. 3-pt. hitch hay rake, very nice,  
 \$1,500  
 Case IH 470 14' disc, 19" blades, (4) tires,  
 very nice, \$3,500  
 Kvernland 3-btm. plow, exc., \$1,500  
 JD 10' cultimulcher, very nice, \$3,000  
 (231) 631-9167



'10 JD 8270R, 5675 hrs., 4-rem., new tires,  
 no DPF or DEF, wts. frt, rear inside & out-  
 side, \$150,000.  
 Holland, MI  
 (616) 218-3543



GSI 1226 dryer, 3-phase, natural gas,  
 upper & lower auger replaced recently,  
 730 bph, 5-pts., ready to move, bees wing  
 screen included, \$35,000.  
 (616) 893-0139

**CULTIPACKER BOB'S**  
 We sell all sizes of cultipackers from 4'-16',  
 specializing in food plot packers, refur-  
 bished & painted. Located in Lake City  
 15' 470 Tdm. IH disc  
 (2) 10' Cultimulchers, (1) Brillion, (1) JD  
 IH 16' cultimulcher  
 JD 10' disc, 3-pt.  
 (616) 648-8190



JD 6145M, MFWD, w/640R ldr., 15 hrs.,  
 3-hyd., pwr. quad, left hand reverser.  
 (574) 633-4852

Medium red clover seed, clean & tested, in  
 50 lb. bags, \$1.80/lb.  
 (989) 240-3581



'03 Gleaner R65, lateral tilt, RWA,  
 6318E/4008S hrs., clean, well main-  
 tained, \$38,000.  
 (517) 749-4634

'02 Int'l. 9200i, N14, 10 spd., 2-line wet kit,  
 alum. whls., very sharp, \$19,900.  
 (989) 213-7165

Conestoga Champion outdoor gasifying  
 wood furnace, the cleanest burn &  
 highest efficiency line of wood fur-  
 naces.

For more info, call  
 Linus Martin (989) 261-3285



Seed tender semi trlr., 150-bu. box, 12'  
 brush auger, Honda pwr. unit w/remote,  
 stored inside, used 2 yrs., asking \$22,500.  
 (989) 621-0928

JD 1790, 12/24 CCS planter, VRD, eSets,  
 20/20 downforce, spike whls., no-tills,  
 in-furrow, nice, \$39,900.  
 (989) 213-7165



Landscape Mulch System  
 Powered by White 2-180, Haybuster 1000  
 tub grinder w/2" screens, colorizer includ-  
 ed, \$30,000 or best offer.  
 (616) 499-5313



Blue Jet Landrunner, 17-shank, super cool-  
 er hyd. valve, 20" blades, Raven mon.,  
 \$8,900.  
 (574) 633-4852



Case 585C, 21' see-thru mast, dsl., forward  
 & reverse shuttle, 4 spd., 48" forks, side  
 shift, 12' mast, tire chains, \$10,500.  
 (517) 819-8721

Young laying hens for sale, Hy-Line Brown  
 \$11.00 ea. @ 17 weeks w/volume dis-  
 counts.

Fairview, MI  
 (989) 335-0080



Yale steel 10" V-ditcher, \$1,600.  
 (586) 405-7835

Fargo side dump beet cart, \$5,500 or best  
 offer  
 Artsway 4R beet digger, \$5,500 or best  
 offer  
 Alloway beet topper, \$2,500 or best offer  
 Wick beet topper, \$1,000 or best offer  
 (989) 975-0448



JD 7720 Titan II, RWA, 3791 hrs., less  
 than 200 hrs. on new concave, rasp bars  
 & shoe augers, new unloading auger &  
 clean grain auger after '23 harvest, newer  
 cab int., good A/C, 30.5Lx32 drive tires  
 @ 95%, always stored inside, very clean,  
 \$18,000.  
 (989) 225-6721

Mixed hay for sale! 4x5 Round bales  
 Net wrapped or plastic wrapped  
 Delivery available  
 Large quantities available  
 Haylage and corn silage avail.  
 (231) 250-8261

Insulated steel panels for shop or building,  
 call for pricing  
 Parting out '81 GMC Astro, 8V71  
 Natural gas generator, 35KW, \$3,000  
 Hobart meat band saw 220 elec. \$2,250  
 Hobart mixer grinder & S.S. tables  
 Case 1690 needs axle, \$3,750  
 Gravity conveyor, \$25 per foot  
 Walk-in coolers & freezers  
 (616) 293-6531

**HANOVER AG LLC**

Are repairs getting your profit? Let's face it, repairs must happen, but why not use good quality, new, after-market parts for combine, tractor, etc., repairs for less money, therefore increasing your bottom line located in southeast Michigan. I also offer repairs at my shop for those repairs you don't have time for, or are more than you want to get into at "small" shop rates.

Call (517) 745-8192 for more!  
Shipping avail. for parts!



JD 450 21-hole grain drill, \$7,500.  
(586) 405-7835



Progressive 1300 strip-tiller, 12R w/markers, John Blue ground driven high cap. pump, Red Ball monitoring system, 3-whl. tow behind 750-gal. nurse tank, all in good cond., field ready, \$26,000.  
(616) 366-1640



'11 Hardi Navigator 4000 sprayer, 1200-gal. liquid tank 130-gal. rinse tank, diaphragm pump, new diaphragms & valves in Spring '23, 90' Eagle boom, no cracks, triple nozzle bodies, tank & tires not age checked, \$18,000.  
(586) 615-9761



Firestone tires (2) 14.9R30, \$500; (4) 14.9R46, \$1,500.  
Refurbished JD 4455 & put new on  
Call after 3:30 pm  
(989) 239-3963

30' Rotary hoe JD 400  
8R Brillion folding cult.  
JD 40 combine  
(574) 633-4852

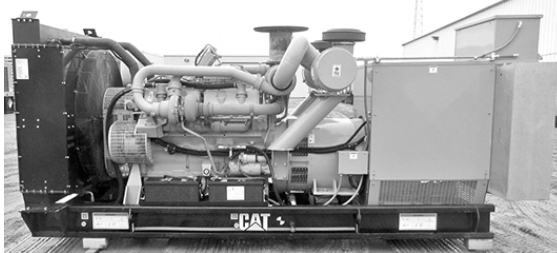
**WANTED**

28' or longer dump trlr. frames, '95 or newer or repairables.  
(989) 550-0644

Certified IDA Oats, \$12/bu. in poly totes; Bio Gene BG9200E3, \$48/140,000, they are Roundup Ready, Enlist Ready & Liberty Ready group 2; soybean.  
(989) 763-5234

June clover seed, state tested, cleaned & bagged in 50 lb. bags, \$125/bag.  
Mike Newman (989) 802-1288

JD 5460 self-propelled forage harvester, 3R green corn head, 7' hay head, 5463 hrs., \$25,000  
NH FP240, 29P hay head, cab controls, tdm. axle, no KP, \$22,500  
H&S M9 hay merger, stationary ext., newer cross belt, \$5,800  
JD 7800, 8824 hrs., MFWD, \$52,500  
JD 4020, 11,305 hrs., \$18,000  
All equipment shed kept & waxed, exc. cond.  
Call for details (989) 709-0931



GENERATORS: Used, low hr. take-outs, 20kW-2000kW, dsl., propane, nat. gas.  
Abraham Generator Sales Co.  
www.abrahamindustrial.com  
(701) 371-9526



Conveyor sand stacker, 80', direct feed bin, new belt, new head & tail whls., used for stacking dairy sand, used 5-yr. ldr. to feed.  
(989) 620-4226



Ford broom tractor, model 3910, new rear tires, \$4,500.  
(989) 620-4226



'78 JD 8630, 1000 hrs. on 50 Series reman. motor, 24.5x32 tires, new hyd. pump, system has been flushed, \$20,000 or best offer.  
(269) 275-0887

(4) Firestone 225/70R19.5 tires, 14-ply, \$100 for all  
JD 7000 6R, good cond., \$3,250  
JD 930 flex head, field ready, \$4,000 or best offer  
(989) 763-1084

**WANTED TO BUY**

KSI rubber pleated beltveyor for gravity wagon w/elec. & manual starting options & hyd. starting options, 12'-14' long.  
Email: marvin48861@yahoo.com



Knight PS160 manure spreader, bought new in '12, poly floor, dbl. beater, high flotation tires, exc. cond., \$23,000.  
(616) 366-1640

(16) 6" Alum. pipe, 30' long, hook & latch, very heavy wall  
(50) 4" Alum. pipe, 30', hook & latch, (30) w/Rainbird sprinkler heads, shut-off valves & caps  
(989) 351-8304

'14 Great Plains turbo chisel, 11-shank w/ rear chopper whls., \$17,000  
Westfield transport auger, 8"x56', PTO drive, \$2,500  
(269) 760-6567



'95 Case IH 6500 chisel plow, 9-shank, HD reset, hyd. disc gangs, very clean & slightly used plow, \$6,500 or best offer.  
(517) 554-8818

3500 6R Amity sugar beet topper, like new  
AGI Westfield 8"x71' grain auger  
3500 High performance generator  
New Craftsman 10-amp reciprocating saw  
New Craftsman 3/8"x53' air hose & reel  
Hypertherm Powermax 45 plasma cutter  
Artsway 692 sugar beet harvester w/all Richmond updates, field ready  
Westfield 8"x60' ground auger for grain  
(810) 705-0181



IH 1586, brand new duals, 3-rem., \$15,500.  
(989) 826-3160

30' Rotary hoe JD 400  
8R Brillion folding cult.  
JD 40 combine  
(574) 633-4852

Case IH stone trap beater part #47994531, like new \$1,500  
 Case IH small rotor for flagship combines, 500 hrs. on it, \$6,000  
 AWS air reel manifolds & drop tubes for 40' draper head, \$2,000  
 16-13" Yetter row cleaner whls., can be used as closing whls., \$15 ea.  
 Ariens RT5020 rear tine tiller, \$200  
 Hardi model 600 (2) diaphragm sprayer pump \$400  
 (989) 397-2681



96"x102" Lift axles, tdm., air rides, straight axles, used Neway Hend. parts, new & used Granning boxes.  
 (989) 737-2856

H&S M6 hay merger w/ext., \$8,000 or best offer  
 NH 499 haybine, \$8,500  
 Meyer 3954 spreader, \$8,000  
 NH 855 round baler, \$3,500  
 (810) 837-0192

**Please Mention  
 Michigan Farm Trader  
 When Contacting Our Advertisers.  
 Thank you!**



Grain bins dismantled, 10,000-bu./30,000 bu. more or less.  
 (989) 838-4112

**RETIRED FROM FARMING**  
 Kewanee 200-bu. gravity wagon w/JD running gear  
 JD 712 coulter chisel, 9-shank  
 Kewanee 20' disc  
 Sugar beet topper, all rubber belt drive, field ready, 4R  
 (2) JD plows, 18" btm., (1) 5-btm., (1) 6-btm.  
 Bean rod puller, 6R  
 53' Van trlr., hub pilot whls.  
 Stone box & pusher bar for JD 8000 tractor  
 Remlinger PTO driven ditcher  
 Small V-ditcher  
 JD 8R single shank cult.  
 Top Air trlr. ultra lite sprayer, 60' boom  
 Navigator quick hitch  
 (989) 573-0096

IH 480 disc, 20', very good cond., recent new blades & bearings, \$3,200 or best offer; Ldr. w/bucket & forks, MDS Shur-Lock Quicktach, \$3,500; Burch 7' kilifer disc, very good cond., \$2,500 or best offer.  
 (989) 330-3869

IH 2860 chisel plow, 7-shank, good shape, \$5,000.  
 (269) 673-3407

Steinbauer pwr. module 230129, Case IH 12.9L, Iveco Tier 4A, bought new, used 1 season on Case IH 485.  
 (989) 551-6200

White 445 11-shank chisel plow, less than 300 acres on new blades, bearings & bushings, field ready, \$5,500 or best offer  
 '97 JD 9500 combine w/duals & 4WD, 3705E/2428S hrs., owned since '10, 2nd owner, in field ready cond., comes w/693 corn head & '01 920F full finger flex head, very low acre head, comes w/20' header cart, everything stored inside when not in use, pkg. deal, \$48,500 or best offer  
 Ask for Scott (616) 318-4515

'97 GMC C7500 grain truck, 14' box in good shape, solid, 366 gas eng., very good tires, \$5,000  
 '82 Ford 7000, Cat dsl. grain truck, 18' box new in '13, good tires, runs fine, cab rough, \$6,000  
 (517) 320-0507

JD 6R30" corn planter, ready to work, \$2,250.  
 (810) 384-1713

Whl. disc, 11', H.D. Oliver 20" blades, new tires & cyl., \$1,200.  
 (734) 770-2034

Case IH 1666 combine, 4WD, good tires, rock trap, 5497 hrs., \$18,000; Case IH 1063 corn head, \$3,000; Gleaner F3 combine, 4WD, very good frt. tires, 5226 hrs., \$4,000; Case 4690, very good inside tires, dual work, good runner, \$4,500; Gleaner 315 flex head, newer wobble box, \$1,500.  
 (517) 320-0507



JD 750, less than 300 acres on new blades, boots & others, Yetter markers, seed bin ext., \$19,500 or best offer.  
 (517) 605-3253