

Terri Patterson,
Used Trailer Sales Manager
(616) 723-1944
CALL NOW FOR YOUR BEST DEALS
(800) 320-5972

FINANCING AVAILABLE



LONG TERM LEASING AVAILABLE



1701 Steele Ave. SW
www.trailerequipment.com

A to C Credit Financing Available!

QUANTITY DISCOUNTS AVAILABLE

TRADES WELCOME



STORAGE

- 1990 Monon storage
- 1999 Monon storage
- 2000 Hyundai storage, #533085

FLAT

- (2) 2019 Dorsey 48' flat
- 1999 Dorsey flat
- 2008 Transcraft flat
- 2018 Manac flat, #20181
- 2018 Manac flat, #20183
- 2018 Manac flat, #20187

DOUBLE DROP

- 1998 Trail King double drop

REEFER

- 2006 Utility reefer
- (5) 2012 Great Dane reefer
- 2012 Great Dane reefer, #17051
- 2012 Wabash reefer
- 2012 Hyundai reefer, #849
- 2012 Hyundai reefer, #860
- 2012 Hyundai reefer, #861
- (3) 2015 Utility reefer
- 2016 Utility reefer
- 2014 Hyundai reefer

VAN

- 2002 Wabash van
- 2003 Strick van
- 2004 Stoughton van
- 2004 Great Dane van
- 2004 Strick van
- 2005 Great Dane van
- 2005 Stoughton van, #53187
- (4) 2005 Vanguard van
- 2005 Wabash van
- 2005 Vanguard van, #53482
- 2005 Vanguard van, #53455
- 2005 Vanguard van, #53491
- (2) 2006 Great Dane van
- (4) 2006 Wabash van
- (2) 2006 Vanguard van
- 2008 Strickland van
- 2008 Wabash van, #5308192
- (3) 2008 Wabash van
- (2) 2014 Wabash van
- (3) 2015 Hyundai van

CURTAIN

- 2005 Manac curtain, #T38

STORAGE VANS!

Starting at just \$2,000!



(100+) Storage Vans, 48' & 53', swing & roll doors, watertight!! Call for pricing. **DELIVERY AVAILABLE!** Call to set up an appointment.



(2) 2000 Great Dane 53' reefers, flat floors, logistic posts, Carrier unit.



(2) 2015 Utility reefers, 53'x102", Carrier units, duct floors.



(2) 2007 Wabash 53'x102" reefers, flat floors, Carrier unit, logistic post.



2007 Hyundai reefer, 53'x102", flat floor, Thermo King unit.



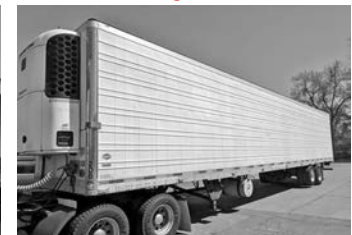
2008 Transcraft Eagle II 53'x102" combo, bulkhead, spread.



(10) Available, '06 Trailmobile & Strick 53'x102" dry vans.



(7) 2005 Stoughton 53'x102" drop frame vans, swing doors, air ride.



2006 Utility reefer, 53'x102" flat floor, logistic post, Thermo King unit.



2007 Hyundai 40' liftgate van.



2004 Stoughton, 53'x102", plywood lined, translucent roof, air ride, swing doors.



(6) 2006 Tractor dollies, (Great Danes).



2007 Wabash 53'x102" reefer, duct floor, Carrier unit, E-track.

**WE ARE BUYING TRAILERS EVERY DAY, NO MATTER THE AGE OR CONDITION!
CALL TERRI PATTERSON TODAY (616) 723-1944!!**