

MAY FEATURED CLASSIFIEDS

CLASSIFIED

RATES: \$3.00 per line;
\$15.00 minimum per insertion;
each picture additional \$15.00.
Deadline: 16th of every month.

Mail to:
MICHIGAN FARM TRADER
P.O. Box 25007
Lansing, Michigan 48909
or call (517) 484-7600
or FAX (517) 484-4777
e-mail: mail (at) gotoMFT (dot) com



Claas Rollant 46 round baler, 4x4 bale, w/net or twine, operates good, just went to a bigger baler, \$5,500.
(586) 713-9488



'94 Int'l. 8200, Cum. REMAN. M11, wet kit, 13 spd., all tires like new, starts, runs & drives good, \$10,000.
(574) 361-1495



'11 Pik-Rite 1880 VB manure spreader, good cond., 1-owner, used w/beef, used 1st 6 yrs., but not since '17, shedded since, \$62,500.
Call or text for information or pictures
(517) 719-4445

Grain-O-Vator, works great, holds (6) tons of feed, don't need it any more, \$2,500.
(231) 928-6067

Phiber SM 1048 windrow merger, (2) 10' pickups
DX160, 2WD
'90 Ford F250, 7.3 dsl., 4x4, auto., 2-door, make offer
(989) 550-5439

AC model C eng. block, exc. cond., was Magnafluxed, asking \$500.
No texts, leave message (517) 962-9113

JD 237 baler w/kicker, elec. controls, rblt. plunger w/all new parts, rblt. chamber w/new guides, \$7,500 or best offer.
(269) 758-3564

NH 360 N3 corn head for parts or rebuild, \$1,500 or best offer.
(574) 892-5699

100 Hp flat head V8, 8000 miles, fits '49-'51 Ford & Mercury, \$3,000.
South of Benton Harbor
(269) 479-6702

WANTED
1 Row potato planter.
(989) 634-5931

New Westfield MKX 8"x71' transport grain auger, sling away, PTO drive, hyd. lift, brand new
(12) New JD granular chemical copper buckets w/all attachments for MaxEmerge XP planters
(810) 705-0181

WANTED
800-1000 Gal. bulk tank for dairy.
(231) 821-0979

WANTED
IH or Oliver 6-btm. trlr. plow.
(989) 666-1775

Cat D4D crawler track & winch, \$2,500
Gleaner N6 combine, 4WD, for parts
Tires for AC C tractor, 4.00x15 frts., 9.00x24 rears, good tread, \$300
Allis WC 5.5x16 frt., 13x24 rear tires, \$150
(574) 892-6417



Dryhill 8" lagoon pump for sale, \$10,000.
(419) 392-2164

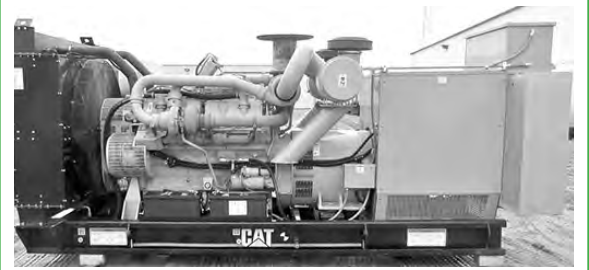


'04 Bobcat S300, A/C, 2 spd., quick tach, self-leveling, no known issues, 3139 hrs., been through shop, \$24,000 or best offer.
(574) 361-9847

(16) 6" Alum. pipe, 30' long, hook & latch, very heavy wall
(50) 3" Alum. pipe, 30', hook & latch, (30) w/ Rainbird sprinkler heads, shut-off valves & caps
(989) 351-8304

AC WD 45 w/3-pt. hitch & whl. wts., runs, \$2,250 or best offer
3-Btm. plow, \$350
(517) 732-1403

'14 Cat 226B3 skid ldr., w/bucket, new tires & paint, aux. hyd., 5525 hrs., exc. machine, \$18,500 or best offer; IH Farmall 460 NF, original paint, \$3,600; Skid ldr. mount tiller, 6' wide, \$1,100; JD 494A 4R corn/bean planter, dry fert. & Gandy boxes, nice working machine, \$800
Oak Ridge Acres
(989) 763-2008



GENERATORS: Used, low hr. take-outs, 20kW-2000kW, dsl., propane, nat. gas.
Abraham Generator Sales Co.
www.abrahamindustrial.com
(701) 371-9526



'13 NH TD5050, only 2031 hrs., always stored inside, well taken care of, reason for selling: needed bigger tractor, I've owned since 237 hrs., \$49,950.
(269) 207-8954



'19 Amazone Catros hi speed disc solid packer, 30' working width, 400 acres on new blades, \$75,000.
(989) 560-1556



'15 Kubota M5-091, 4x4, hyd. shuttle, 725 hrs., great shape, radial tires, \$53,000 or best offer.
(989) 213-5872

WANTED
Used or repairable spray foam marker system for field sprayer.
(989) 292-0349

Looking for IH 806 dsl. tractor that sold at auction in May '93 at Lennon, MI by John F West of Lawndale Farm.
Please call or text w/info
(269) 689-0200

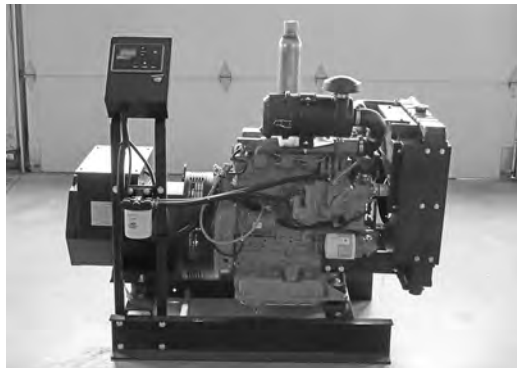
WILL DO METAL BARN ROOFS on any style barn.
Call (269) 651-4929

Young laying hens for sale, Hy-Line Brown \$10 ea. @ 17 weeks w/volume discounts. Delivery avail., pre-orders preferred.
Fairview, MI
(989) 335-0080

CULTIPACKER BOB'S
We sell all sizes of cultipackers from 4'-16', specializing in food plot packers, refurbished & painted. Located in Lake City; Discs from 8'-10'; Just in: 3-Pt. chisel plow; 12' Transport cultipacker, hyd. lift
Some parts available
(616) 648-8190



'08 NH HW345 discbine, 15' cut, 1800 hrs., in great shape, \$51,500 or best offer. (810) 656-1946



25kW Used Kubota dsl. eng. w/a new generator & Dynagen controller. Can be 3-phase or 1-phase. Call for info (260) 350-5735



Kuhn Knight mixer, exc. cond., twin screw vertical 540 w/LH discharge, very little use, \$32,000 or best offer. (989) 424-1172



JD 635 mower conditioner, good working cond.
JD 336 square baler
Brady 15' stalk chopper
Unverferth 6R no-till coulter attachment
(231) 468-7524



JD 2210 35.5' field cultivator, 3-bar spike, rolling basket new in '23, float hitch w/ Accudepth. Nar. transport, Nichols 7" teeth, 6" spacing, \$21,000. (810) 543-5700

JD 7200W corn planter, very nice, mon., \$4,500
NH 315 square baler, \$2,000
IH 315 15' cultimulcher, \$3,000
(231) 631-9167



'94 Ford L8000, 8.3 Cum., 210 hp, 6 spd., M/T 295/75R22.5 10' box, elec. tarp, air gate, \$12,000. (616) 677-2751

IRRIGATION PIPE
4000' Of 3", many have sprinklers
5000' Of 4"
Assortment of fittings & elbows, \$1/ft.
(616) 894-6989

NH PowerStar 120 self-leveling ldr., new radial tires, frt. fenders, bale spear & bucket, 1700 hrs., extra clean, \$68,000 or best offer
NH 7220 discbine, exc. shape, many extra parts, \$16,000
(906) 440-9417



6'x10' Trailer, added sides, drop gate, new tires, \$1,500. (248) 302-5554

Field cultivators, discs, chisel plows, rolling harrows, cultipackers, cultimulchers, Richardton 960 dump carts & more. See full page ad. Find page number in index under Loesel, Scott.
Call (989) 860-3917

'16 MAC 8-axle dump trlr., air ride, (6) lift axles, liner, pwr. side to side tarp, brakes, 60%-95%, tires 50%-95%, ready to go to work, \$135,000 or best offer. (231) 286-1971

H&S in-line bale wrapper, model LW1100 w/ remote control, exc. cond., \$28,000. (989) 296-9581 or (989) 313-7323



Kubota B7300 tractor, 4WD, 5' frt. blade, 3-pt. PTO, 2026 hrs., works good. (260) 350-1151



'16 Case CX160C excavator w/hyd. thumb, 2891 hrs., clean, dent-free, straight, \$100,000 or best offer. (989) 539-9842

'92 JD 4255 tractor, cab, A/C, heat, MFWD, PS, 3-SCVs, duals, only 5400 hrs., exc., \$55,000. (231) 631-9167



'91 Case 550LT 6-way balde, \$20,000
'07 Deere 120C, A/C, 9'8" stick, 25" bucket, aux. hyds., \$45,000
'16 Cat 308E2 CR, cab, long stick, hyd. thumb, \$54,000
'19 Cat 305E2 CR, cab, hyd. thumb w/16" bucket, \$48,000
'22 Cat 304 OROPS QT 12" bucket, angle blade, \$48,500
'18 Kubota KX71-3 H.T., QT 18" bucket, \$30,500
'21 Deere 35G, A/C, 18" tag QT bucket, hyd. thumb, \$42,500
'17 Bobcat E35I, A/C, HT A-blade, 36" bucket, \$36,500
'19 Bobcat E35I, hyd. thumb, 24" QT bucket, \$34,500
'18 Bobcat E32I, 24" tag QT bucket, \$28,500
'23 Cat 289D3, A/C, 4-in-1 bucket, \$47,500
'17 Kubota SVL75-2, A/C, hyd. QT 76" bucket, \$38,000
'22 Deere 317G, A/C, 90% U/C, low hrs., \$47,500
'08 Deere 310J CX4, A/C, 18" bucket, \$45,000
'06 Deere 310G, CX4, A/C, low hrs., \$38,500
'10 Kubota B26, TLB, 4-in-1 bucket, \$22,500
'18 SkyTrak 6036, solid tires, \$42,500
'16 SkyTrak 8042, solid tires, \$42,500
'16 SkyTrak 6042, 52" carriage, 48" forks, 80% tires, \$42,500
'12 Doonan 53' step deck w/spread axles, \$12,000
'07 Sterling AT9500, 10 spd. & '19 Automax AMX-JC-HD6, 10-car cap., \$22,500
Multiple attachments for skid steers, P.O.R. Mid Michigan Services Company, Inc. 8458 Torrey Rd. Grand Blanc, MI 48439 (810) 655-2025 or Mobile (810) 348-4089 E-mail: mmsci@comcast.net Web: www.mid-michiganequip.com

3-Pt. back blade, 8' w/cyl., like new, never used, \$1,000
Coontz 25' field cult. w/leveler, good tires & shovels, \$1,200
(269) 673-3407



1x6x16' Oak Kentucky fence boards, (70) pieces/bundle, full bundle sale only, \$10/ piece, \$700/bundle. (989) 539-9842

(2) 100 Hp flat head V8 blocks for rebuilding, fits '49-'51 Ford & Mercury, \$500 ea. South of Benton Harbor (269) 479-6702



(2) Nuhn 6750 tankers, tankers hold 6750 ea., \$25,000. (419) 392-2164



'86 Case W14 whl. ldr., 4-cyl. Case motor, has knocking noise, \$5,500 w/dirt bucket, \$4,250 w/o dirt bucket
Ag-Rain (2) whl. soft hose cart, \$3,900
34' Kasco dbl. bar clod buster w/attachment, hardly been used, \$950
Speedy 4R bean cutter-puller, \$250
Used 4" or 4.5" soft irrigation hoses (no ends included, \$1/ft
(2) Firestone 480/80R38 tires & 12-bolt rims off a JD 7 Series tractor, tires @ 85%, \$3,900
(616) 881-1157 or (616) 304-4009

Older JD 7000 6R30" corn planter, no fert., \$3,000
JD 8300 grain drill, w/hyd. cyls., 21-hole, \$2,500
9' Hay tedder, used very little, \$2,500
(5) New JD dbl. disc openers for corn, \$800 ea.
(6) JD rear whl. wts., \$100 ea.
Several alum. gates, 16', 14', 10' & 8' size, \$100 ea.
(517) 549-8451

Gold Digger Soil Max tile plow
Stoltzfus 8-ton lime/fertilizer spreader
(2) JD 750 no-till drills
Phone calls only (989) 240-3581

MF 124 baler, works, but needs work, have all parts, \$1,250
20.8 8-Rail rims w/tires, \$300
(517) 526-3272



'10 Case IH 535 quad 30" tracks, 4-hyd. valves, 2500 hrs., \$180,000.
Dorr, MI
(616) 893-8232

Please mention
Michigan Farm Trader
when contacting advertisers!